

CASED AXIAL MINIFLOW
1 PH DIRECT DRIVE FAN
SPEED CONTROLLER: EL13

3rd ANGLE PROJECTION $\square \odot$

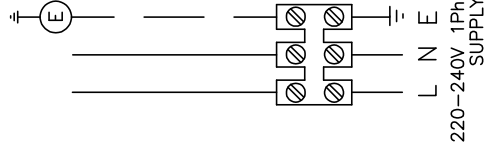
DO NOT SCALE—IF IN DOUBT, ASK!

FIXED SPEED CONNECTION

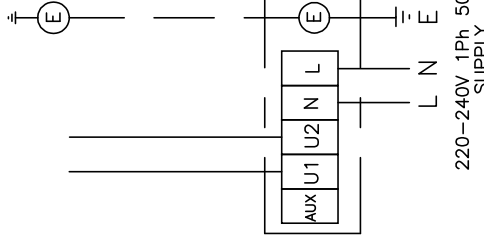
VARIABLE SPEED CONNECTION
CONTROLLER TYPES: 149-EL13

FIXED SPEED CONNECTION

VARIABLE SPEED CONNECTION
CONTROLLER TYPES: 149-EL13

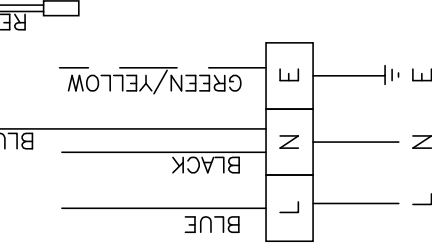


220-240V 1Ph 50Hz
SUPPLY

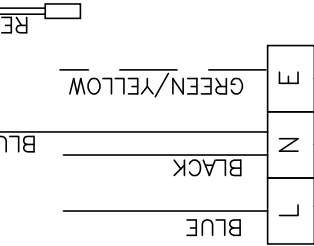


220-240V 1Ph 50Hz
SUPPLY

FAN UNIT
SAMF 150/2-2



220-240V 1Ph 50Hz
SUPPLY



220-240V 1Ph 50Hz
SUPPLY

FAN UNITS
SAMF200/4-2
SAMF200/2-2
SAMF250/4-2
SAMF250/2-2
SAMF315/4-2
SAMF315/2-2

ALL WIRING AND CONTROL EQUIPMENT MUST COMPLY TO THE
LATEST IEE REGULATIONS, IN PARTICULAR PART 552-01-02/03

DIMENSIONS ARE IN mm UNLESS STATED OTHERWISE



ELTA FANS LTD., 15 ROSS
ROAD,
SILVERSMITH INDUSTRIAL ESTATE,
FARNHAM, HAMPSHIRE, PO15 5ST.
Tel: 01489 586500 Fax: 01489 586505
© ELTA FANS LTD. 2004. ALL RIGHTS RESERVED.
This drawing is the property of ELTA FANS LTD. and is not to be
reproduced or used in any way without the written
consent of ELTA FANS LTD. or its authorized
representatives.

ISS	CHK	BY	ISS	CHK	BY	ISS	CHK	BY	ISS	CHK	BY	ISS	CHK	BY	ISS	CHK	BY
DATE	CHKD	DATE	CHKD	DATE	CHKD	DATE	CHKD	DATE	CHKD	DATE	CHKD	DATE	CHKD	DATE	CHKD	DATE	CHKD

DRAWN BY	HH	CHECKED	
DATE	22/07/04	APPROVED	
SCALE	1:2	STATUS	S

DRAWING No. **A3**
152-SAMF-001
SHEET 1 OF 1 ISSUE A

ANY DEVELOPMENT VIEWS SHOWN ON THIS DRAWING ARE SHOWN FOR REFERENCE PURPOSES ONLY. USE OF THESE VIEWS FOR MANUFACTURING PURPOSES ARE AT SUPPLIERS RISK.
THIS IS A C.A.D. PRODUCED DRAWING AND THEREFORE NO SUBSEQUENT MANUAL MODIFICATIONS WILL BE ALLOWED.
TOLERANCES UNLESS OTHERWISE STATED. \pm 1.0

TITLE
WIRING DIAGRAM
FOR 1PH
SAMF FANS
USED ON
CASED AXIAL MINIFLOW
MATERIAL
SPECIFICATION
FINISH

1
2
3
4
5
6
7