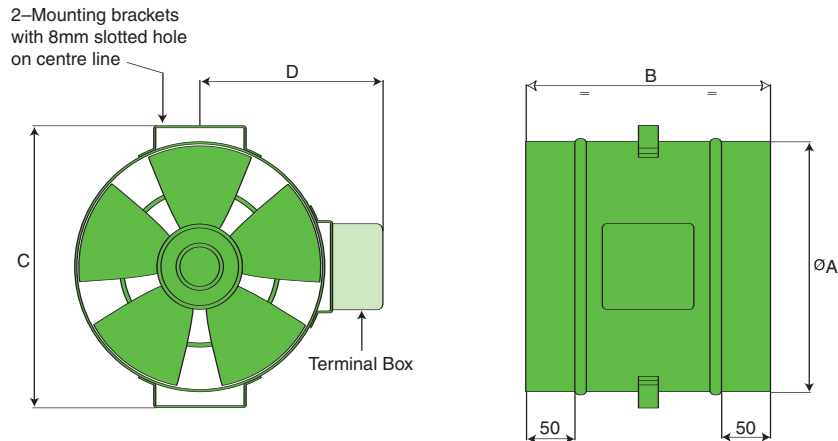


# SMALL DUCT MOUNTED AXIAL FANS - SAMF

# cased axial miniflow



Model	A	B	C	D	Weight kg
SAMF150/2	147	165	N/A	N/A	1.5
SAMF200/4	206	250	236	164	3.5
SAMF200/2	206	250	236	164	3.5
SAMF250/4	260	250	296	190	4.0
SAMF250/2	260	250	296	190	4.0
SAMF315/4	311	250	346	219	4.8
SAMF315/2	311	250	346	219	4.8

## SPECIFICATION

### General

The Cased axial miniflow fan SAMF shall be from the Select range of Elta Fans Ltd. The all-metal fan casing shall provide a long lasting robust construction, manufactured from galvanised steel, with mounting brackets as an integral component. All casings are given a high quality powder coated finish after manufacture, except the SAMF150/2-2 which has a die cast aluminium housing. Spigot inlet/outlet connections allow ease of installation for ductwork system fitting. Motors shall be pre-wired to a terminal box mounted on the outside of the unit casing, except for SAMF150/2-2.

### Impeller Assemblies

The impeller is aerodynamically designed by combining the impeller with the rotor of the external rotor motor. Motor and impeller are balanced to quality class G6.3.

### Motors

External rotor, squirrel cage induction, with sealed for life ball bearings allowing the unit to be mounted at any angle. Motors shall be IP44 protected and Class 'B' insulation. All units are suitable for a maximum of 80% R.H. and ambient operating temperatures of up to +40°C. Motors are wound for 220-240v/1Ph/50Hz A.C. supply, with built in thermal overload protection, except the SAMF150/2-2 which is impedance protected.

### Quality Management

Units are to be designed and manufactured with procedures as defined in BS EN ISO 9001:2000. EEC directives shall be met.

All SAMF units are to be tested to ISO 5801:1997 (airside performance) and BS 848 pt 2:1985 (sound performance).

## ACCESSORIES

- ◆ Speed Controllers
- ◆ Backdraught Shutters
- ◆ Fast Clamps
- ◆ Anti-Vibration Mounts
- ◆ Flexible Connectors
- ◆ Silencers
- ◆ Mounting Brackets

# SMALL DUCT MOUNTED AXIAL FANS - SAMF

# cased axial miniflow

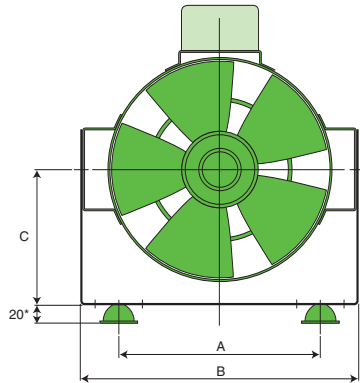


## SINGLE PHASE - FIXED OR VARIABLE SPEED 220-240V / 1PH / 50HZ

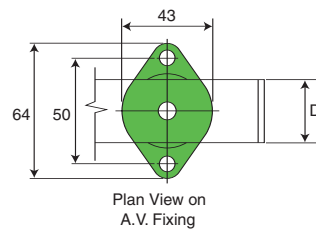
Product Code	Speed rpm	Airflow m <sup>3</sup> /sec @ Static Pressure Pa.								Motor Electrical Data		A.V. Mounts	Speed Controller	Sound Level dBA @ 3m	Silencer Attenuation dBA			
		0	25	50	75	100	125	150	175	FL Amps	Input Watts				300L	600L	900L	1200L
SAMF150/2-2	2760	0.110	0.084	0.063	0.044	0.022				0.25	46	S1B	EL13	43	-15	-21	-24	-27
SAMF200/4-2	1440	0.144	0.093	0.053	0.017					0.13	30	S1B	EL13	52	-11	-16	-20	-23
SAMF200/2-2	2580	0.238	0.208	0.170	0.135	0.107	0.085			0.30	60	S1B	EL13	39	-13	-18	-22	-25
SAMF250/4-2	1380	0.279	0.230	0.151	0.079					0.21	50	S1B	EL13	49	-11	-15	-18	-20
SAMF250/2-2	2520	0.420	0.382	0.347	0.309	0.264	0.210	0.151		0.54	120	S1B	EL13	40	-11	-16	-18	-21
SAMF315/4-2	1320	0.555	0.441	0.280	0.161	0.081				0.32	70	S1B	EL13	47	-12	-15	-18	-21
SAMF315/2-2	2460	0.639	0.621	0.592	0.530	0.440	0.364	0.267	0.209	0.71	160	S1B	EL13	38	-14	-18	-21	-23

Sound levels are average spherical free field values (for comparative use only). Value at 50% peak pressure.

## MOUNTING BRACKETS



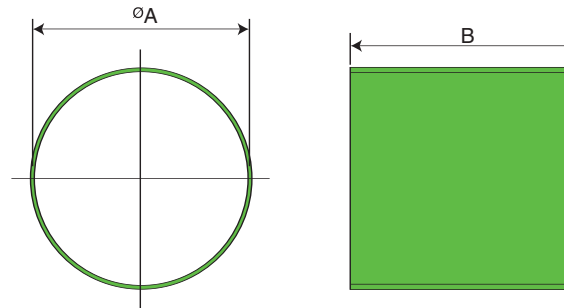
NB. Can also be used as a hanging bracket



Model	A	B	C	D
SAMF200	184	254	131	30
SAMF250	232	312	156	30
SAMF315	287	366	181	30

\* Before Compression

## FLEXIBLE COLLAR & CLIPS

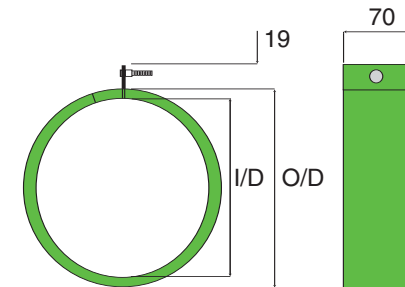


Model	A	B
SAMF150	149	200
SAMF200	208	200
SAMF250	258	200
SAMF315	308	200

### Material & finish

PVC coated polyester fabric in dark grey.

## FAST CLAMPS

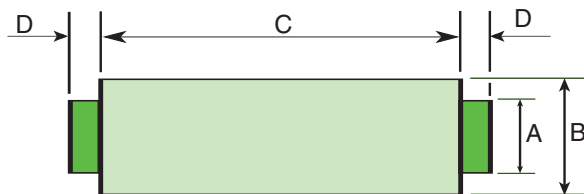


Galvanised steel circular duct clamp with foam lining. For quick and easy connection of circular spigoted fans and accessories.

Model	Fan Dia.	I/D	O/D
0150-CLAMP	150	142	166
0200-CLAMP	200	192	216
0250-CLAMP	250	242	266
0315-CLAMP	315	307	331

**Note:** For product codes please refer to price list

## SILENCERS



Cylindrical in-line attenuators suitable for use with circular spigoted fans such as Cased Axial Miniflow, Jetflow, Hideaway and Quietflow or general use in circular ducted systems.

The casing is manufactured from galvanised mild steel with one piece spun ends.

An inner lining of pre-galvanised, perforated mild steel encloses mineral fibre sound absorbing material with glass facing tissue.

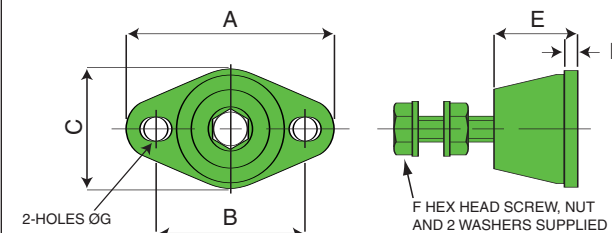
Note: These silencers are not suitable for saturated conditions - Refer to Elta Fans.

Dia.	Fan Dia.	A	B	C	Estimated Weight (kg)							
					1D	2D	3D	4D	1D	2D	3D	4D
0100-JF*	150	148	255	300	600	900	1200	40	3.4	6.1	8.9	11.6
0200-JF*	200	198	305	300	600	900	1200	40	4.2	7.6	11.0	14.5
0250-JF*	250	248	355	300	600	900	1200	40	5.0	9.1	13.2	17.3
0315-JF*	315	313	420	300	600	900	1200	40	6.1	11.1	16.1	21.0

\* Add 1,2,3 or 4 depending on length required.

Note: For product codes please refer to price list

## ANTI-VIBRATION MOUNTS



Fan Dia.	Type	A	B	C	D	E	F	G
150	S1B	64	50	43	5.5	20	M6	7
200								
250								
315								

Fits directly to feet of ducted models to help minimise noise and vibration. Supplied in sets of 4, complete with fixings to mounting feet.

### Material & finish

Rubber with steel insert.