

Model	A	B	C	D	E	F	G	Weight kg.	A.V. Mounts
SCD250	250	306	180	165	8	7.0	286	7.0	S1B
SCD315	315	382	180	207	8	9.5	356	9.0	S1B
SCD350	350	421	180	224	8	9.5	395	10	S1B
SCD400	400	466	190	249	12	9.5	438	15	S1B
SCD450	450	515	190	274	12	9.5	487	15	S1B
SCD500	500	567	250	300	12	9.5	541	23	S1G
SCD560	560	636	250	330	16	11.5	605	23	S1G
SCD630	630	709	250	365	16	11.5	674	30	S1G

Dimensions apply to both single and three phase fans.
For full fan code please see page 7.

SPECIFICATION

General

The Compact duct mounted axial fan SCD shall be from the Select range of Elta Fans Ltd. The all-metal fan casing shall provide a long lasting robust construction. All parts shall be suitably treated to ensure full corrosion protection. Fan casing and motors shall have a powder coated, highly durable, polyester epoxy paint finish in pastel beige (RAL 7032). Casing shall be fully ducted with mounting flanges at both ends.

Impeller Assemblies

Adjustable pitch aerodynamic impellers shall be provided, made from high quality GRP. These shall be factory set at an angle to provide maximum performance. Hubs shall be made from die cast aluminium alloy (LM24). Assembled impellers are to be balanced to grade G6.3.

Motors

Highly efficient, lightweight induction motors shall be provided, these will have sealed for life, maintenance free ball bearings. Each motor shall be matched to the aerodynamic performance of the impeller. Motors shall be Class F insulated to EN 60034-5, weatherproofed to IP55 and suitable for speed control. They shall have an integral thermal overload protection.

The fan shall be suitable for operating temperatures of +70°C fixed speed and +50°C when used with speed controllers.

Electrical connection to the motor shall be provided by an IP55 terminal box fitted onto the outer side of the fan casing.

Quality Management

Units are to be designed and manufactured with procedures as defined in BS EN ISO 9001:2000. EEC directives shall be met.

All SCD units are to be tested to ISO 5801:1997 (airside performance) and BS 848 pt 2:1985 (sound performance).

ACCESSORIES

- ◆ Speed Controllers
- ◆ Flexible Connectors
- ◆ Impeller Side Guards (recommended)
- ◆ Mounting Feet
- ◆ Matching Flanges
- ◆ Anti-Vibration Mounts
- ◆ Silencers

DUCT MOUNTED AXIAL FANS - SCD

compact



SINGLE PHASE - FIXED OR VARIABLE SPEED 220V-240V / 1PH / 50HZ

Product Code	Speed rpm	Airflow m ³ /sec @ Static Pressure Pa.								Motor Electrical Data			Speed Controllers		A.V. Mounts	dBA @ 3m	Silencer Data						
		0	25	50	75	100	125	150	200	FL Amps	SC Amps	Output kW	Elect-ronic	Trans-former			dBA Attenuation		ΔP (Pa)		dBA Attenuation		ΔP (Pa)
																	1DENP	1DEP	1DEP	2DENP	2DEP	2DEP	
SCD250/4-1	1455	0.35	0.29	0.22						0.90	1.45	0.09	EL13T	TC12	S1B	44	-9	-12	7	-14	-18	11	
SCD315/4-1	1390	0.65	0.58	0.50						0.90	1.45	0.09	EL13T	TC12	S1B	48	-9	-13	10	-15	-19	15	
SCD350/4-1	1330	0.88	0.77	0.66	0.54					0.90	1.45	0.09	EL13T	TC12	S1B	53	-10	-13	10	-16	-20	16	
SCD400/4-1	1375	1.35	1.25	1.13	0.97					1.80	3.60	0.25	EL13T	TC14	S1B	56	-9	-13	17	-16	-20	25	
SCD450/6-1	850	1.16	0.98	0.73						1.05	2.00	0.12	EL13T	TC12	S1B	50	-9	-13	8	-16	-19	12	
SCD450/4-1	1300	1.65	1.55	1.43	1.25	1.10				1.80	3.60	0.25	EL13T	TC14	S1B	59	-9	-13	16	-15	-19	24	
SCD500/6-1	860	1.55	1.40	1.10						1.55	3.50	0.18	EL13T	TC14	S1G	54	-10	-14	11	-17	-20	16	
SCD500/4-1	1350	2.48	2.34	2.20	2.05	1.90	1.76			3.60	10.8	0.55	EL16T	TC18	S1G	62	-9	-13	14	-15	-18	36	
SCD560/6-1	875	2.40	2.20	2.05	1.70					2.20	5.50	0.25	EL13T	TC14	S1G	58	-9	-13	15	-16	-19	23	
SCD560/4-1	1350	3.45	3.25	3.10	2.90	2.60	2.35			4.90	15.0	0.75	EL16T	TC18	S1G	65	-9	-13	29	-15	-19	41	
SCD630/6-1	850	3.55	3.20	2.80	2.40	1.90				6.00	12.6	0.55	EL16T	TC18	S1G	59	-11	-15	16	-16	-23	23	
SCD630/4-1	1310	4.16	4.06	3.95	3.84	3.71	3.57	3.42	3.04	7.90	19.8	1.1	-----	TC110	S1G	68	-10	-15	30	-15	-23	51	

THREE PHASE - FIXED OR VARIABLE SPEED 380V-415V / 3PH / 50HZ

Product Code	Speed rpm	Airflow m ³ /sec @ Static Pressure Pa.								Motor Electrical Data			Speed Controllers	A.V. Mounts	dBA @ 3m	Silencer Data						
		0	25	50	75	100	125	150	200	FL Amps	SC Amps	Output kW	Transformer			dBA Attenuation		ΔP (Pa)		dBA Attenuation		ΔP (Pa)
																1DENP	1DENP	1DEP	2DENP	2DEP	2DEP	
SCD315/4-3	1390	0.65	0.58	0.50						0.50	1.15	0.12	TC33	S1B	48	-9	-13	10	-15	-19	15	
SCD350/4-3	1330	0.88	0.77	0.66	0.54					0.50	1.15	0.12	TC33	S1B	53	-10	-13	10	-16	-20	16	
SCD400/4-3	1375	1.35	1.25	1.13	0.97					1.40	4.50	0.37	TC33	S1B	56	-9	-13	17	-16	-20	25	
SCD450/6-3	850	1.16	0.98	0.73						0.68	1.70	0.18	TC33	S1B	50	-9	-13	8	-16	-19	12	
SCD450/4-3	1300	1.65	1.55	1.43	1.25	1.10				1.40	4.50	0.37	TC33	S1B	59	-9	-13	16	-15	-19	24	
SCD500/6-3	830	1.55	1.40	1.10						0.94	2.40	0.25	TC33	S1G	54	-10	-14	11	-17	-20	16	
SCD500/4-3	1320	2.48	2.34	2.20	2.05	1.90	1.76			1.75	6.20	0.55	TC33	S1G	62	-9	-13	14	-15	-18	36	
SCD560/6-3	830	2.40	2.20	2.05	1.70					0.94	2.40	0.25	TC33	S1G	58	-9	-13	15	-16	-19	23	
SCD560/4-3	1320	3.45	3.25	3.10	2.90	2.60	2.35			2.00	7.50	0.75	TC35	S1G	65	-9	-13	29	-15	-19	41	
SCD630/6-3	850	3.55	3.20	2.80	2.40	1.90				1.90	5.80	0.55	TC35	S1G	59	-11	-15	16	-16	-23	23	
SCD630/4-3	1320	4.75	4.65	4.54	4.40	4.25	4.05	3.80	3.30	4.30	15.5	1.5	TC35	S1G	68	-10	-15	38	-15	-23	55	

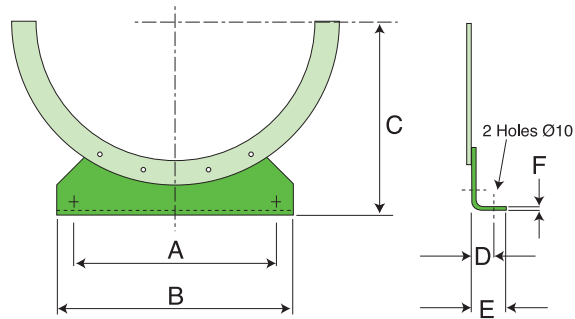
Sound levels are average spherical free field values (for comparative use only). Value at 50% peak pressure are shown in the above tables. Performance data shown is applicable to nominal running speeds as appropriate. All 3Ph electrical data stated at 400V.

Inverters are fully enclosed in an IP55 enclosure c/w with control knob and RFI filters.

7 Performance & Electrical Data

Products detailed within this data sheet represent the stocked range of Elta Compact Fans. Many more options, selections and sizes are available on a made to order basis.

MOUNTING FEET



Fan Dia.	A	B	C	D	E	F
250	200	230	170	20	40	1.6
315	250	280	200	20	40	2.0
350	280	310	225	20	40	2.0
400	220	250	250	20	40	2.0
450	240	275	275	20	40	2.0
500	280	315	315	25	50	2.5
560	320	355	355	25	50	2.5
630	360	400	400	25	50	2.5

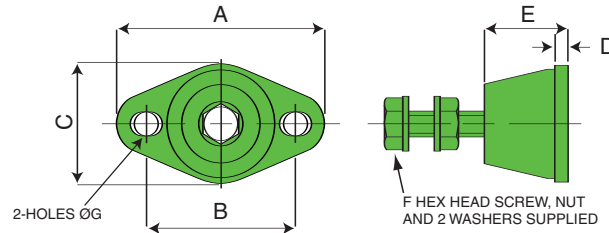
For free standing support of ducted models. Mounts directly to casing flange. Supplied individually, less fixings.

Material & finish

Steel, painted in pastel beige (RAL 7032).

Note: For product codes please refer to price list

ANTI-VIBRATION MOUNTS



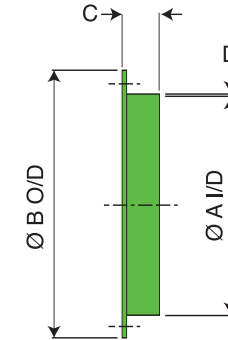
Fan Dia.	Type	A	B	C	D	E	F	G
250	S1B	64	50	43	5.5	20	M6	7
315								
350								
400								
450								
500	S1G							
560								
630								

Fits directly to feet of ducted models to help minimise noise and vibration. Supplied in sets of 4, complete with fixings to mounting feet.

Material & finish

Rubber with steel insert.

MATCHING FLANGES



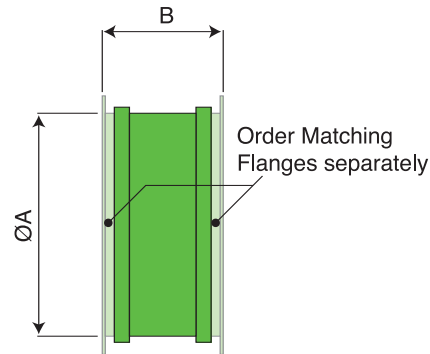
Fan Dia.	A	B	C	D
250	250	286	30	1.6
315	315	382	30	1.6
350	350	421	30	1.6
400	400	466	40	1.6
450	450	515	40	1.6
500	500	567	45	1.6
560	560	636	45	1.6
630	630	709	45	1.6

Fits directly to duct fan mounting flanges so as to provide a coupling for a Flexible Collar, or an alternative fixing for any other matched inter-connection. Supplied individually less fixings.

Material & finish

Steel, painted in pastel beige (RAL 7032).

FLEXIBLE COLLAR & CLIPS



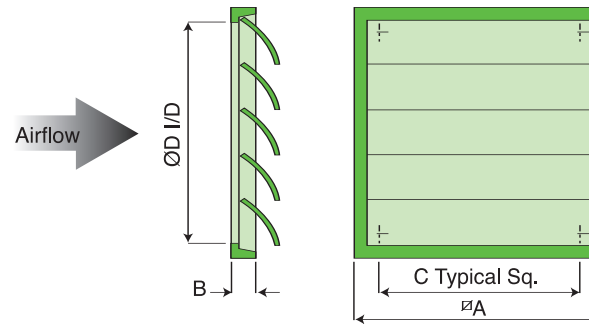
Fan Dia.	A	B
250	253	150
315	318	150
350	353	150
400	403	150
450	453	150
500	503	150
560	563	150
630	633	150

Fits directly to matching flanges so as to provide a flexible interconnection with any matched interface e.g. ducting. Supplied individually, complete with band fixings.

Material & finish

PVC coated polyester, plated steel banding.
- Alternative materials available to order.

LOUVRE SHUTTERS



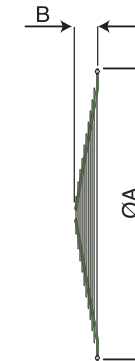
Fan Dia.	A	B	C	D
250	294	26	232	260
315	347	26	276	310
350	397	26	310	360
400	459	26	364	420
450	501	26	395	460
500	549	31	445	510
560	605	31	626	-----
630	696	43	722	-----
710	760	43	722	-----
800	840	40	772	-----

All-weather louvre with vanes that open automatically when fan airflow commences. Fits independently of fan (ideally wall mounted downstream of fan). Supplied with screw fixings.

Material & finish

Durable polypropylene in light grey.

IMPELLER GUARDS



Fan Dia.	A	B
250	270	17
315	335	21
350	270	23
400	420	26
450	470	29
500	520	32
560	585	32
630	655	40
710	730	50
800	820	50

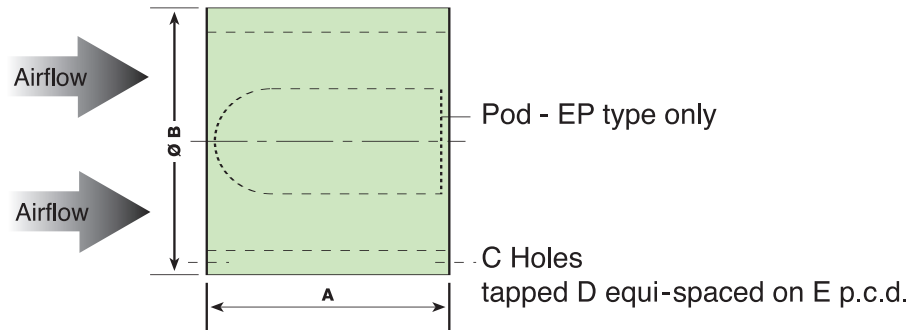
Fits to SCP venturi casing outlet with clips. Affords protection to the rotating impeller.

Material & finish

Bright zinc plated steel.

Note: For product codes please refer to price list

SILENCERS



Fan Dia.	A 1D	A 2D	B	C	D	E	Estimated Weight kg.			
							1DENP	1DEP	2DENP	2DEP
250	250	500	350	8	M8	286	7	9	11	13
315	315	630	415	8	M8	356	9	11	15	17
350	350	700	450	8	M8	395	11	13	18	21
400	400	800	500	12	M8	436	13	16	22	26
450	450	900	600	12	M8	487	15	18	27	31
500	500	1000	650	12	M8	541	18	22	32	37
560	560	1120	710	16	M10	605	22	26	39	46
630	630	1260	780	16	M10	674	26	32	48	57

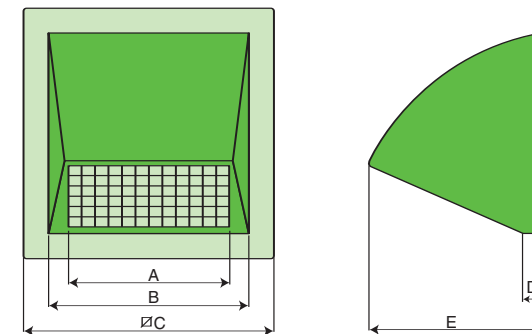
Four variants of silencers are available. 1DENP and 2DENP are a straight through design whilst 1DEP and 2DEP contain a cylindrical centrebody for enhanced attenuation. This latter type incurs an airside pressure drop. Silencers are supplied less fixings.

Material & finish

Pre-galvanised steel sheet casing and perforated lining. High density mineral wool in-fill with glass tissue facing. These silencers are not suited to saturated conditions - Refer to Elta.

Note: For product codes please refer to price list

WALL COWLS



Fan Dia.	A	B	C	D	E
250	340	410	500	30	325
315	340	410	500	30	325
350	430	510	610	30	390
400	430	510	610	30	390
450	560	645	755	30	470
500	560	645	755	30	470
560	690	815	935	30	555
630	690	815	935	30	555

Wall Cowls have been designed to protect extract fan openings from prevailing weather conditions. The shape minimises resistance to airflow.

Material & finish

Manufactured from GRP - colour impregnated into Gel coat. Complete with integral bird screen (galvanised mesh).