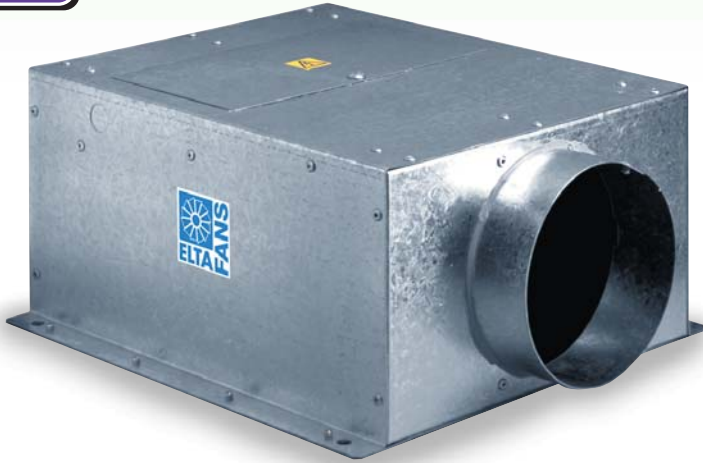


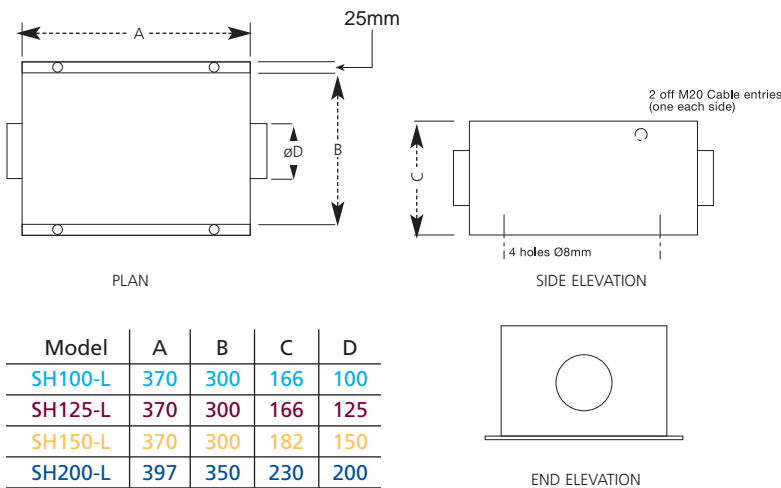


SH IN-LINE CENTRIFUGAL RANGE

The ELTA SH range of boxed "In-line centrifugal" fans has specifically been designed for internal use, especially where space is at a premium and noise is a low criteria.



Dimensions



Model	A	B	C	D
SH100-L	370	300	166	100
SH125-L	370	300	166	125
SH150-L	370	300	182	150
SH200-L	397	350	230	200
SH250-L	422	350	280	250
SH315-L	400	400	340	315

Optional Features.

Speed controllers
149-EL21. 149-EL31.



Back draught dampers
018-100 to 315-DAMPER.



Electric heaters
018-0100 to 0315-HEAT-1.



Fast clamps
018-100 to 315-CLAMP.



Panel filters
018-0100 to 0315-FILT-P.



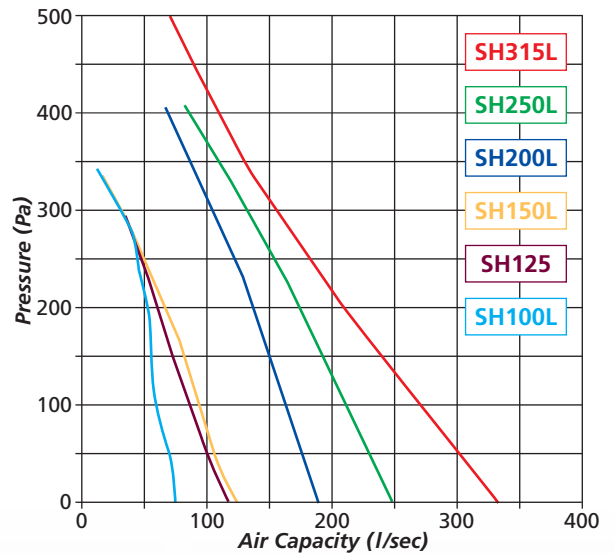
Silencers
068-0100 to 0315-JF1/JF2/JF3/JF4.



Technical Specification

- One-year guarantee.
- Duty range 70 l/sec (252m³/h) to 330 l/sec (1188m³/h) at pressures up to 500 Pa.
- High efficiency, maintenance free external rotor motors with inbuilt **Thermal Overload** protection, matching the aerodynamic performance of the impeller.
- Maximum ambient working temperature of up to 50°C.
- Fan casings lined with non-toxic, flame retardant acoustic material.
- Access to the fan and motor via an easily removable panel, sealed using non hygroscopic neoprene.
- All fans are **CE** marked and comply with relevant EEC directives.
- All fans Tested to ISO 5801:1997 (airside performance) and BS 848 Pt 2 1985, (sound performance).
- Motors are all weather proofed to IP44 and suitable for speed control.
- High efficiency single inlet, single width backward curved centrifugal impeller, designed to be non overloading and self cleaning.

Performance Data



Technical Information

Model	Diameter	Volts	Watts	R.P.M	l/sec	MaxPa	dB@3m
SH100-L	100	230	75	2450	70	350	42
SH125-L	125	230	77	2350	110	300	45
SH150-L	150	230	78	2380	1120	300	45
SH200-L	200	230	130	2750	180	400	50
SH250-L	250	230	160	2500	240	400	55
SH315-L	315	230	200	2150	330	500	55