

Introduction

The Waterloo SG series security grilles have been designed in conjunction with the prison service for supply and extract of air in places where security is a priority - from prison institutions, courts and police stations to secure buildings. Manufactured from 3mm thick mild steel plate, SG series grilles are available in three versions - SG1, SG2 and SG3 - able to meet ventilation needs in high, medium or low security applications. The series offers rectangular or square size options from 100mm up to 600mm.

Product Description

- SG1** High Security Grille With Rear Fixing
- SG2** Medium Security Grille With Face and Rear Fixing
- SG3** Low Security Grille With Face Fixing
- OBSS** Allen Key Operated Opposed Blade Damper
- PB** Plenum Box

Features

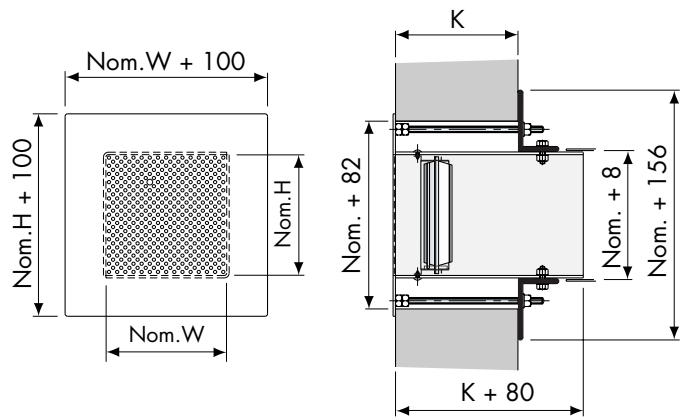
- Low, Medium or High Security Applications
- Side or Top Entry Connections Available
- 3mm Perforated Faceplates

Finishes

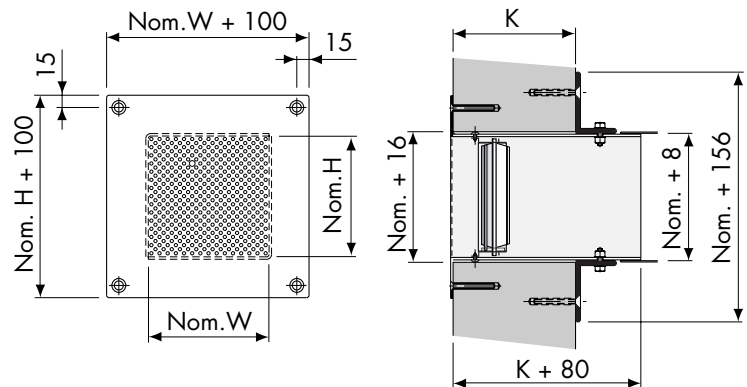
Zintec coating as standard.
 PPM9006 (RAL 9006 Matt Silver)
 PPM9010 (RAL 9010 20% Gloss White)
 PPG9010 (RAL 9010 Gloss White)
 Other colours available on request.

Specification of Perforations in Front Face

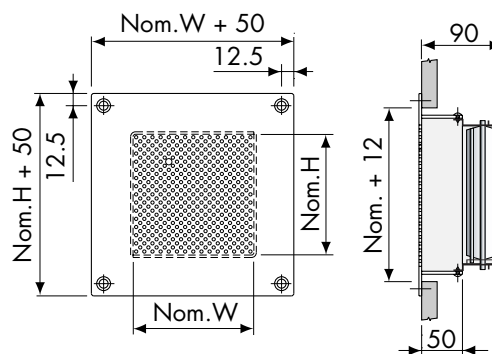
Perforations are 3mm diameter at a 5mm pitch



SG1 + OBSS



SG2 + OBSS



SG3 + OBSS

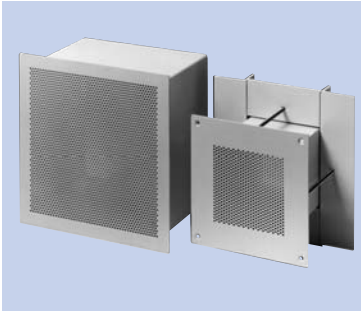
Order Example

SG1/300x300x150/PPM9006/OBSS

Type _____
 Nominal Width _____
 Nominal Height _____
 Depth _____
 Finish _____
 Control _____

Free Area

35%



Selection Criteria

Throw data is based on a free jet under isothermal conditions and is presented for a terminal velocity of 0.5m/s.

Jet throws to a terminal velocity of 0.25m/s can be obtained by applying a factor of 1.5.

Noise data is presented in terms of sound power based NR levels and is valid for supply and exhaust applications

Selection Example

SG1/300x300 for an Exhaust application

Air flow rate 200 l/s

Jet throw 4.8m

Pressure loss 18 Pa

Noise level NR 20

Performance Nomogram

