

Fire Rated Air Transfer Grilles

GV GNV GR

Waterloo

Introduction

Waterloo fire rated grilles are suitable for 1 hour fire rated doors and partitions. They are manufactured from heat expanded material, and are tested according to NEN 6069 (Test report is available on request.)

Product Description

- GV1** Grille with straight fins
- GNV1** Grille with fins on an angle
- G(N)V1C** Grille with frame
- G(N)V1A** With frame and contra frame
- G(N)V1CP** With perforated plate
- G(N)V1AP** With perforated plate both sides
- GV1G** Grille with slated front plate
- GR1** Round grille
- GR1K** Round grille with frame
- GVB** Assembled grille (GV) in one frame, maximum size 1200x800.

Features

- 1 hour fire rating
- Easy to install
- Suitable for door and partition mounting
- Available with frame and covering steel grilles

Finishes

Grille: Grey
 Frame and perforated plate:
 PPM9006 (RAL 9006 Matt Silver)
 PPM9010 (RAL 9010 20% Gloss White)
 PPG9010 (RAL 9010 Gloss White)
 Other colours or anodised finish available on request.

Weights

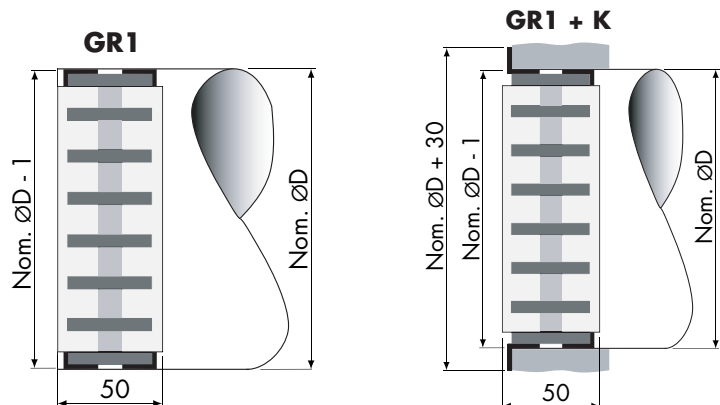
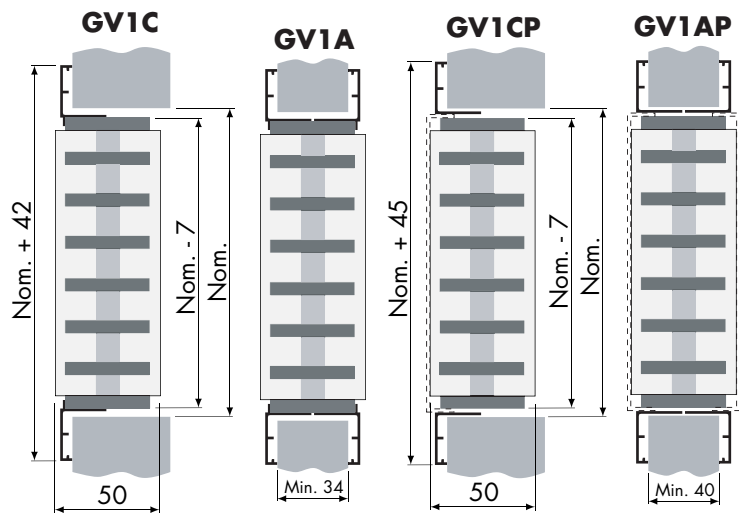
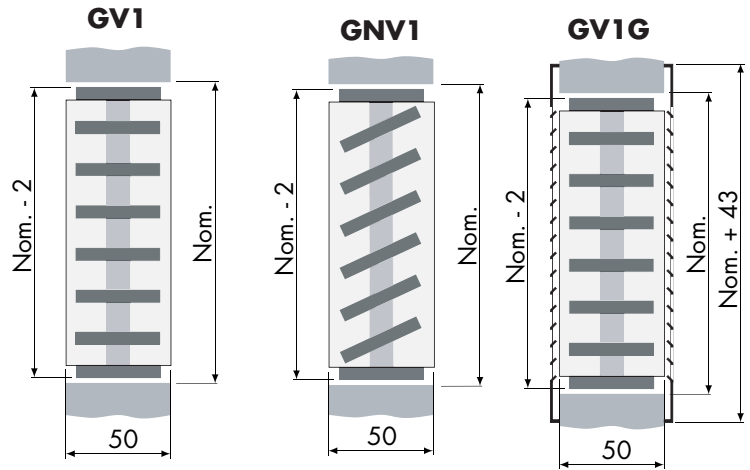
- G(N)V1 24 kg/m² face area
- G(N)V1C 25 kg/m² face area
- G(N)V1A 26 kg/m² face area
- G(N)V1CP 29 kg/m² face area
- G(N)V1AP 34 kg/m² face area
- GV1G 35 kg/m² face area

Sizes

- GV1 Max 600mm x 400mm
- GNV1 Max 600mm x 300mm
- GVB Max 1200mm x 800mm
- GR1 Max 400mm Diameter

Fixings

For details please refer to page 41
 Suffix C - SF
 Suffix A - PSF, SF



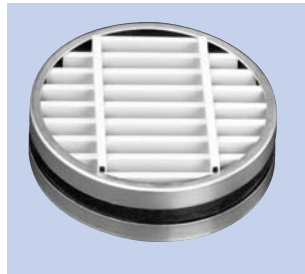
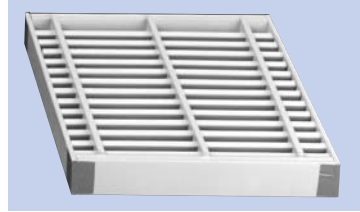
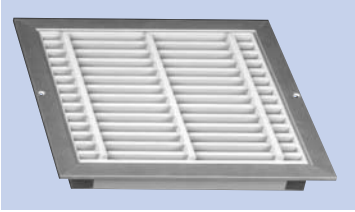
Order Example

GV1AP/500x300/PPM9010/PSF

Type
 Nominal Width
 Nominal Height
 Finish
 Fixing

Free Area

G(N)V1 G(N)V1C G(N)V1A	G(N)V1CP G(N)V1AP	GV1G
67%	40%	27%



Selection Example GV1

Air volume : 600 m³/h
 V_{eff} : 3m/s
 W x H : 200 x 400
 P_s(Pa) : 7 Pa
 L_w : 24 dB(A)

Symbols:

q_v(m³/h) = Air volume
 V_{eff}(m/s) = Effective air velocity
 W_n(mm) = Nominal Width
 H_n(mm) = Nominal Height
 D_n(mm) = Nominal diameter
 S_n(m²) = Free area
 P_s(Pa) = Pressure drop
 L_w (dB(A)) = Soundpressure
 V_{eff} max: 8m/s
 Max. Pressure: 300Pa

Performance Graphs

